

Electronic tap with battery



CERTIFICATIONS & STANDARDS



SAFETY INFORMATION

THE MANUFACTURE CANNOT BE CONSIDERED RESPONSIBLE FOR DAMAGES CAUSED BY IMPROPER USING OR INSTALLATION

- Do not use this electronic equipment in a humid location, especially in a sauna or steam room.
- Do not touch the device with wet hands.
- Do not use extension cables in locals dedicated to bathing or showering.
- Do not pull from the cable to disconnect it from the power supply.
- Do not strike or kick the control box, as this may damage the unit or cause a leak.
- Do not expose the device to extern agents such as sun or rain.
- If the device stops working, it only can be repaired by qualificated professionals.
- Periodically check the piping for leaks.
- If the outside temperatures drops to freezing, wrap the pipes with insulation.
- Avoid placing any objects within the detection range of the infrared sensor.

MAIN COMPONENTS DESCRIPTION

BOX



Electronic system powered by batteries for infrared faucet to be installed on the body's faucet.

Sensor +Body



Infrared sensor to be placed on the body faucet

Batteries box



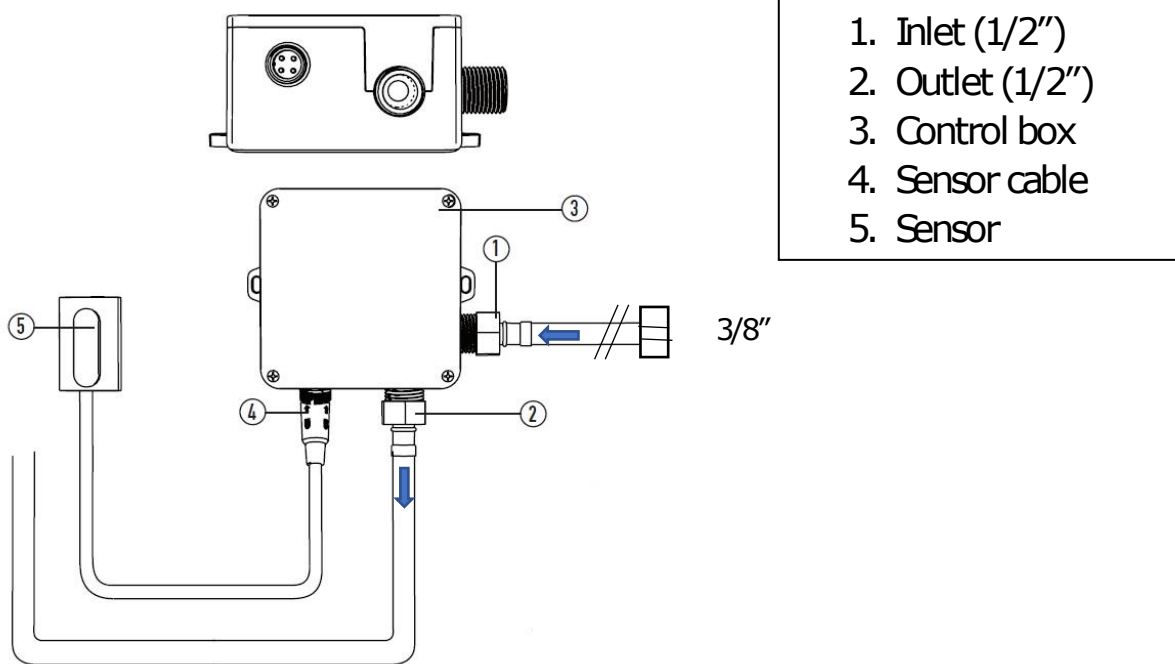
TECHNICAL SPECIFICATIONS

Voltage supply	DC: 6V;AC:230V(50Hz)/110-120V (60Hz)
Working pressure	1-7 bar
Pressure resistance closed (1 min)	35 bar
Endurance	500.000 cycles
Max. hot water	75°C
Flow rate (RhA)	10.8 l/min, 5 l/min with aerator assembled
Sensor activation time	<1s
Protection against intrusion (control box)	IP 65
Protection against intrusion (sensor)	IP 67
Sensor detection distance	15 cm
Power consumption (standby)	<4W
Power consumption (flushing)	<5W
Box threads	G1/2
Sensor detection angle	15 deg (conical)

FUNCTIONS & FEATURES

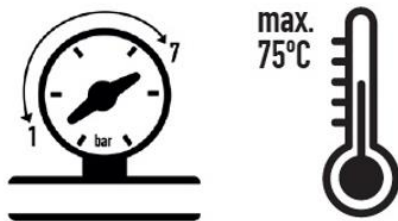
Infrared sensor activation
Helps to save water and energy
Easy to use
Hygienic (reduces risk of cross-contamination)
Powered by battery
Vandal resistant
Easy to fit in all kinds of installation environments

CONNECTION SCHEMATICS

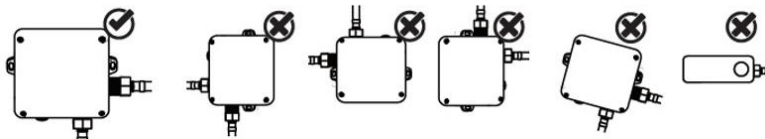


INSTALLATION TIPS

Before installation

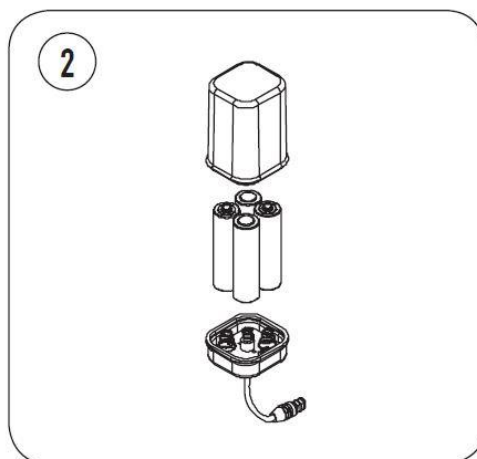
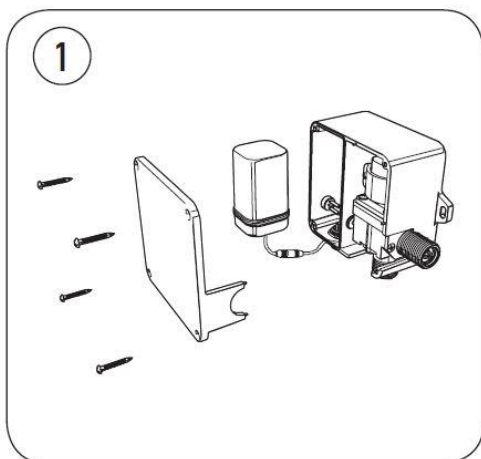


(!) Check the water supply pressure and make sure the water of installation does not exceeds the maximum.

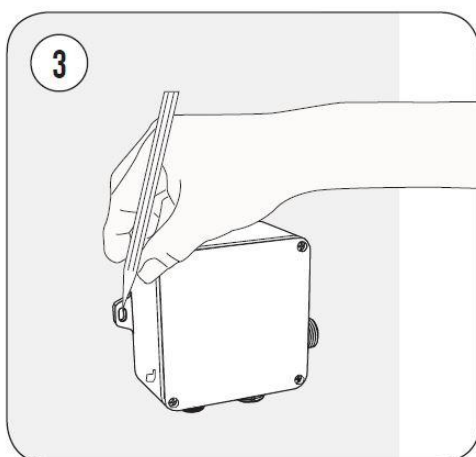


(!) Do not install in any different position than the intended.

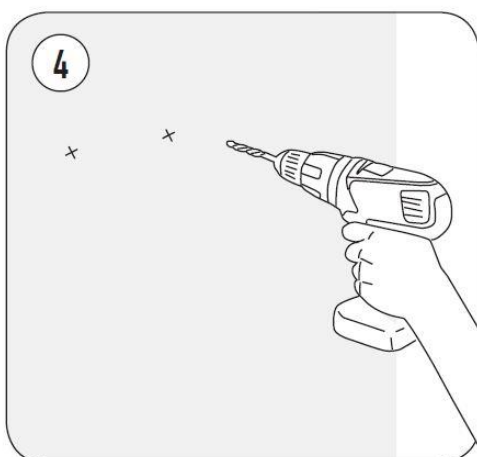
- Flush all water lines before installation.
- Pay special attention so that the sensor surface is not flawed or scratched during the installation process.
- Make sure that all pipework, stop valves, and connection lines are installed according to local codes.



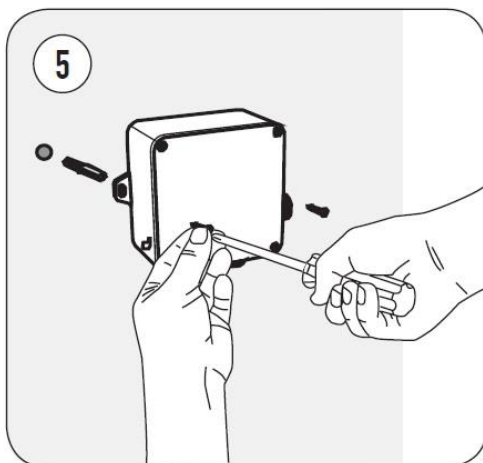
Open control box and put the 4 AA alkaline batteries into the battery box.



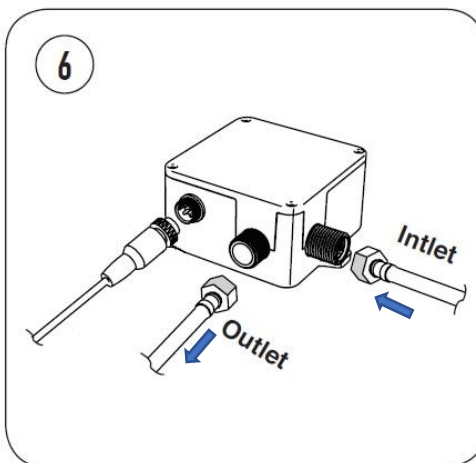
Mark the position of the holes with a pencil.



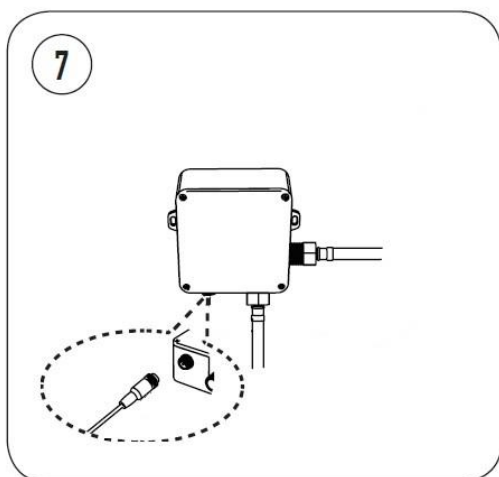
Make the holes in the wall with the appropriate measures.



Fix control box to the wall.

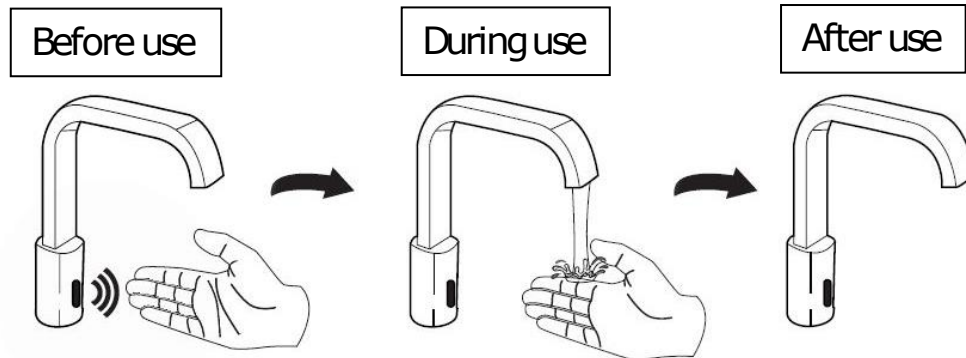


Install elements and connect the water inlets (IN/OUT).



Connect the IR sensor to the control box.

USING MODE



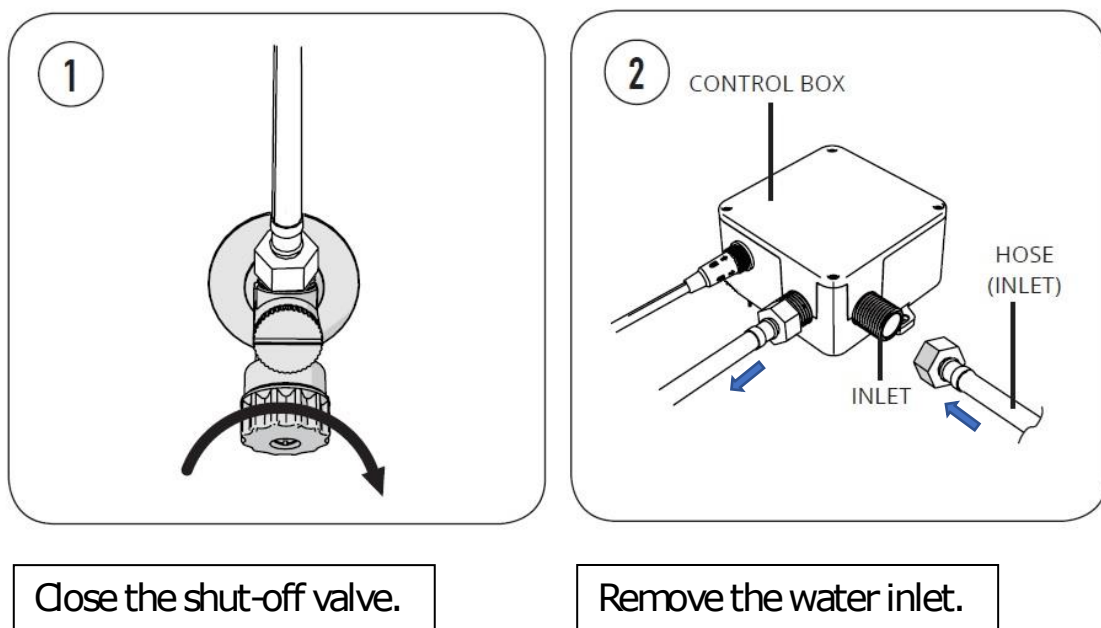
NOTE:

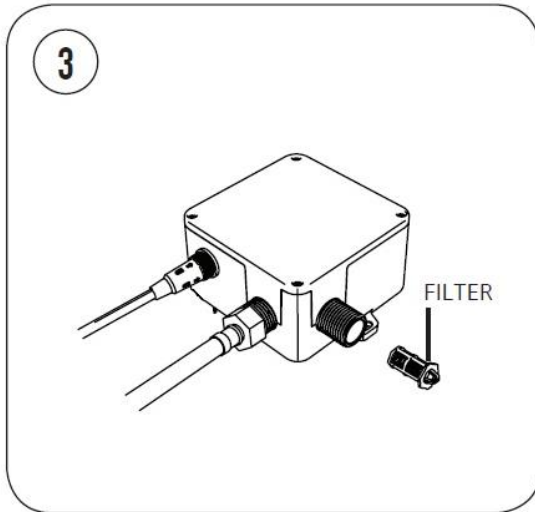
When your hands enter the inductive field the water flows. Remove your hand from the field to stop the water. It will stop automatically after flowing 60 seconds continuously.

MAINTENANCE

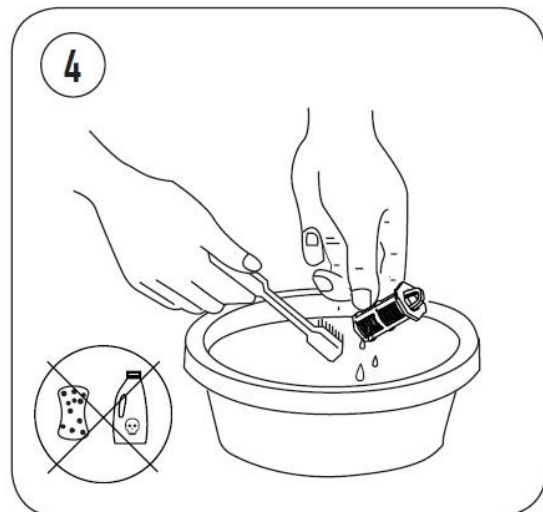
Clean the filter

Filter cleaning is recommended every 6 months or in case of water flow reduction.



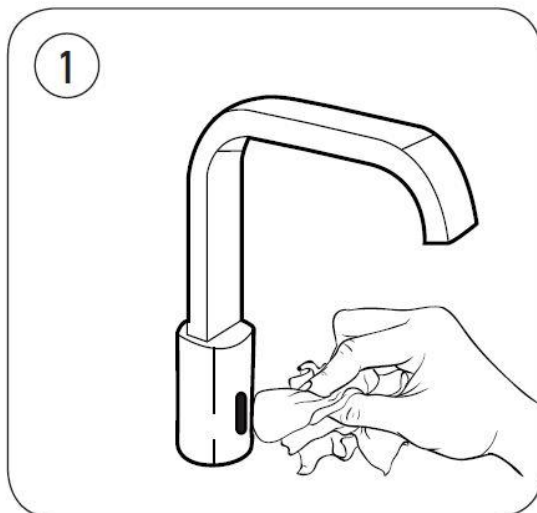


Remove the filter.

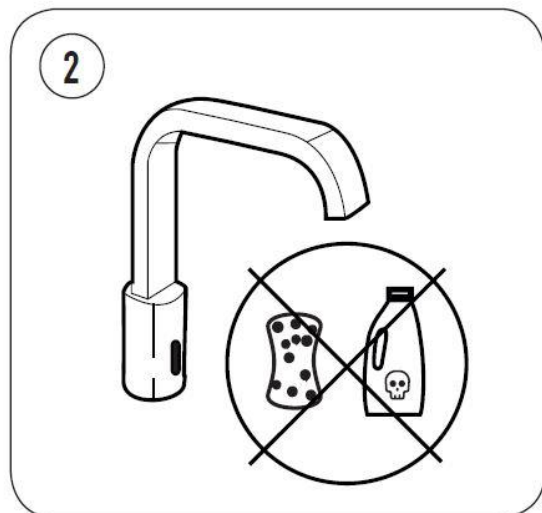


Clean the filter. Do not use scouring pad and use only non-acid liquid detergents.

Clean the sensor

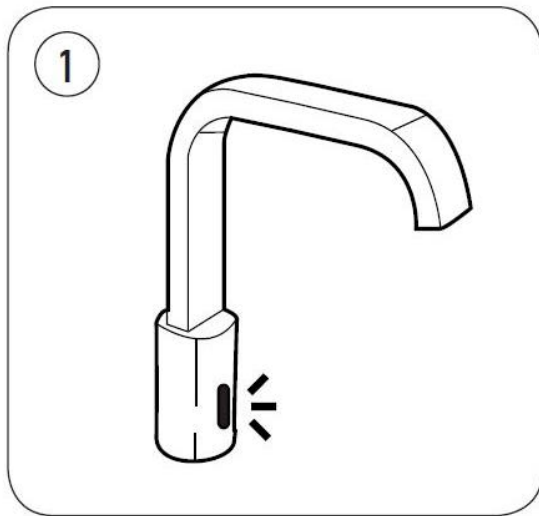


Keep the sensor window clean, taking care not to scratch it.

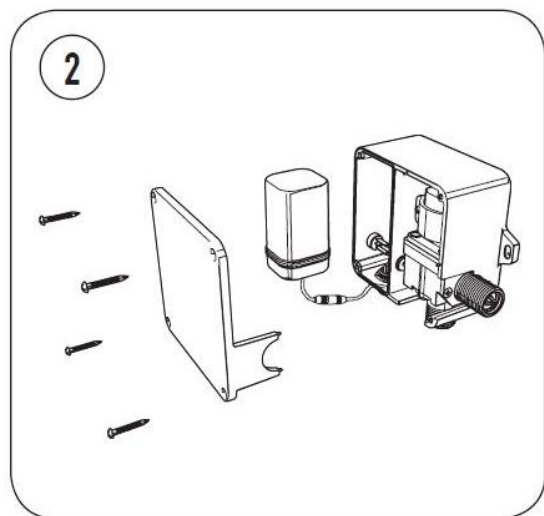


Do not use scouring pad and use only non-acid liquid detergents.

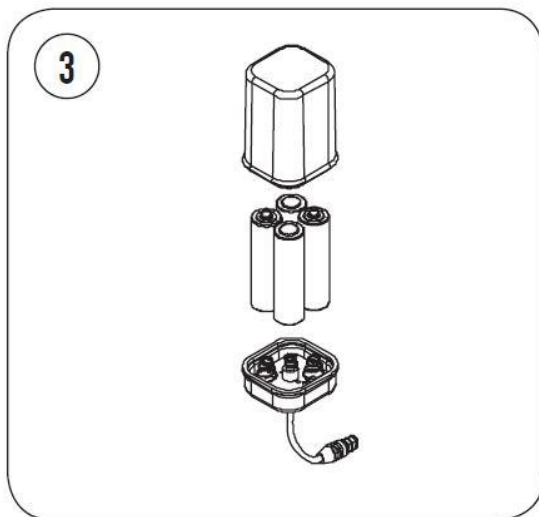
Change of batteries



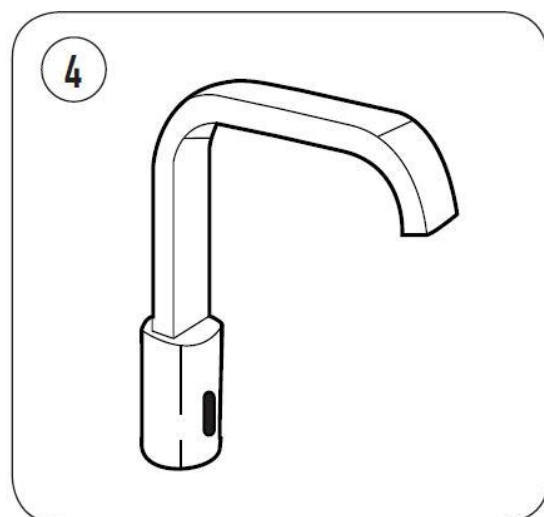
When the light flashes, the battery is exhausted.



Dismount the housing of the system to access to the batteries box.



Unscrew the screw on top of the batteries box and introduce the new batteries.



If the batteries are correctly replaced, the flashing light should stop.

THOUBLESHOOTING

Problem	Cause	Solution
No water out	The battery is exhausted	Change the battery
	Water supply cut off	Check supply
	Blocked filter	Clean the filter
	Water pressure is too low	Raise the pressure
Low flow of water	Water supply is turned down	Adjust water supply
	The filter is too dirt	Clean the filter
	Water pressure is too low	Raise the pressure
Excessive water flow	Water pressure is too high	Adjust pressure
Short cycles of battery	Incorrect batteries	Change to 4 AA Alkaline batteries
The indicator light in the sensor is not turning on	The light is broken	Change the light or circuit board
	The circuit board is wet or signal line is wet	Dry out
	The battery is exhausted	Change the battery
	Poor connection of battery	Change the battery connection